

MIE-250

Grouting Equipment.

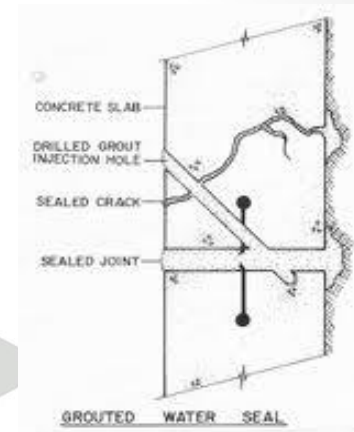
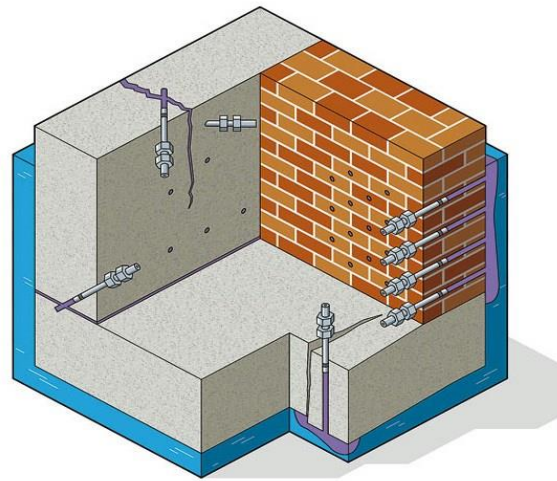


Brand High pressure, Compact, Professional
PU and Epoxy Resin injection grouting Pump.

Manufactured by-
Metro Industries,
Bangalore(India).



Grouting:

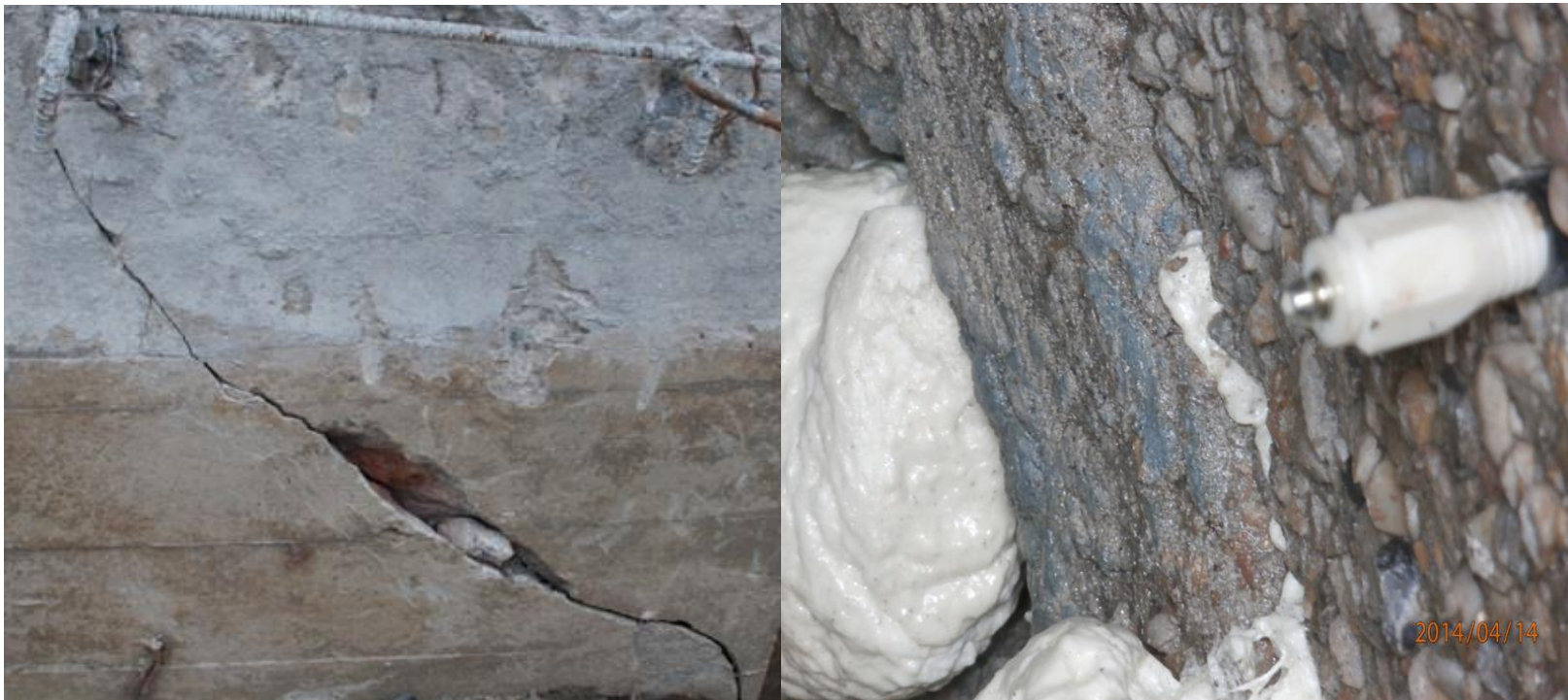


- **Pressure grouting** involves injecting a grout material into generally isolated pore or void space of which neither the configuration or volume are known, and is often referred to simply as *grouting*.
- The purpose of grouting can be either to strengthen any structure or stop water flow through a formation.
- It is used to correct faults in concrete and masonry structures.
- The grout may be a cementitious, resinous, or solution of chemical mixture.



Resinous or PU Grouting

- The main use of pressure grouting is to improve geo materials (soil and rock) and remedial water proofing which can be efficiently done by resinous or PU injection.



PU or Resinous Grouting Equipment:

Metro Industries provides MIE-250 as a complete set of equipment required for PU or Resinous Grouting:

- MIE-250 Piston Pump.
- Injection packers.
- High pressure hose pipe.
- Injection adaptor.
- Injection nozzle gun.
- Overhauling tools.
- Remote switch.
- Drive motor.

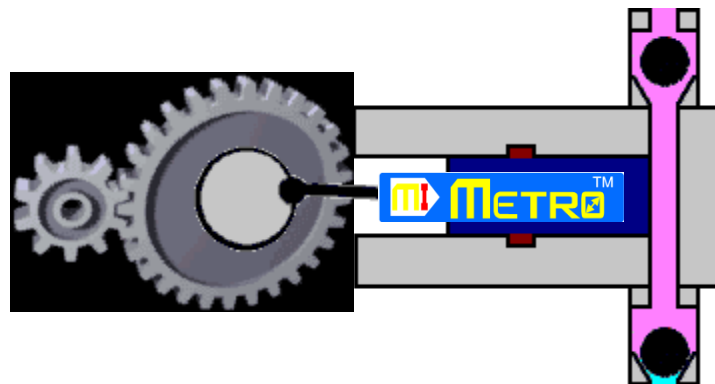


Main Parts of MIE-250 set:



Working:

- MIE-250 is a piston operated pump.
- Piston is connected to a link which in turn connected to a offset crank from gear box assembly, Gear box is driven by the drive motor.
- The piston generates a high pressure on the fluid.
- Proper locking of the pressure of the fluid is provided with efficient N.R.V.s and seals, which makes the pump more efficient.
- The fluid from outlet goes with a high injection pressure and velocity.



Specifications of MIE-250:

- Working Pressure > 5000 psi(345 Bars).
- Flow Rate – 1000 ml per minute.
- Hopper -1.4 litre Stainless steel.
- Hoses - 400 bar pressure.
- Ball valve – 400 bar pressure.
- Pressure gauge – 600 bar pressure.
- Gear box lubrication – grease.
- Fluid handled – PU or Epoxy resin.
- Fluid viscosity – 10 to 1000 cps.
- Electrical connections – single phase 220 volts.



Features and Benefits:

Item	Feature	Benefit
Pump	Output Pressure up-to 8000 psi	Suitable for injection grouting.
	Output discharge up-to 1 LPM	Suitable for fast acting chemicals and time saving.
	Suitable Material selection	Compatible with grouts.
	Detachable	Easy to clean and maintain.
Drive Motor	Electronic drill machine	Provides High torque.
	Low Weight (2.7 kg approx.)	Can be carried easily.
	220 V A.C.	Easily available.
Stainless Steel feed Hopper	1.5 liter capacity	High Volume capacity.
	Cleaning	Can be scrapped and cleaned.
	Durability	Highly durable.
	Fluid handling	Epoxies, urethanes, solvents, water.
Fluid Hoses	Compatibility with epoxies, urethanes, solvents, water	One hose fits all – no changing hoses between applications
	Swivel connection	Easy to change hoses – saves time, Orientation at any angle.
	High Pressure capacity.	Suitable for grouting job.
Pressure gauge	5000 psi	Pressure can be regularly monitored.
Injection Gun	Ball type valve design	Avoids splattering in changeover from hole to hole.
Other Accessories	Suitability	Suitable with pump and grouting jobs.

Technical Details:

- Designed best suitable for small and medium size professional grouting jobs.
- Ultra light, modular, sophisticated and detachable design.
- High torque and small sized drive motor.
- Designed with proper understanding of site conditions and safety precautions.
- Can handle any noncorrosive fluid with viscosity range of 10 to 1000 cps.
- Durable design with low cost and low maintenance.
- Easy cleaning.
- Easily replaceable parts.
- Can also be used for 2 component resins.
- Designed compatible for other grouting accessories.



Caution:



THANKS AND REGARDS



Industries

Bangalore- 560062

www.metroindustries.in

www.groutingpumps.com

Email: info@metroindustries.in

M- (+91-9980739952)

